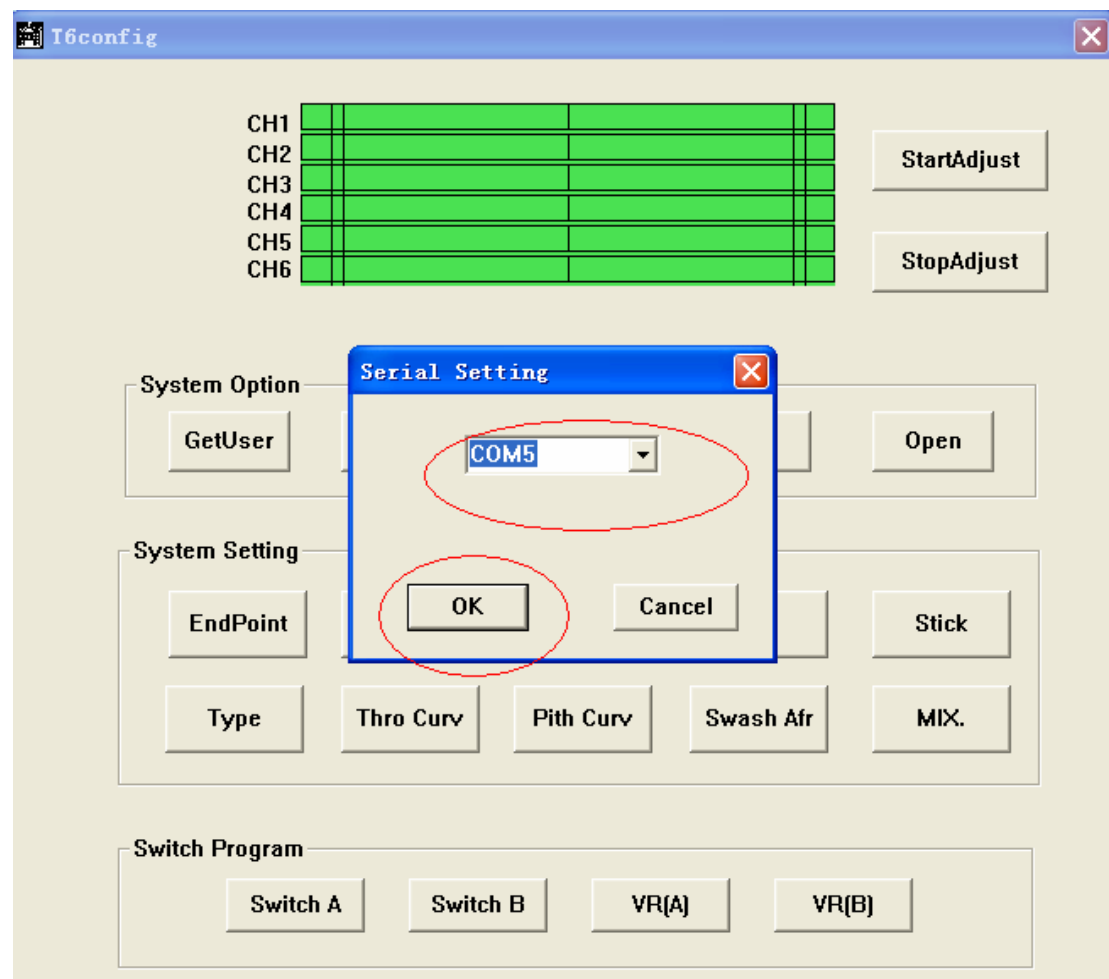


Dual click test.exe

select serial setting and click ok



2.,click startadjust

3. Led is flashing (please check ct6a tx)

4. place trim as follow pic



5, place stick of right as follow pic1/pic2/pic3/pic4

Pic1





Pic2



Pic3





Pic4



6, place stick of left end as follow pic5~8

Pic5





Pic6



Pic7





Pic8



7. place trim as follow





8, repeat step5-step6

9,click stopadjust

10, click open

11. select cool.tst